

Monte da Palhaqueira Village

Algarve, Portugal



Casa Por do Sol

1 Bedroom Apartment

- Area of Construction 98m²
- 1 Double Bedroom
- 1 En-suite Shower Room
- Cloakroom
- Fully Fitted & Equipped Kitchen
- Air Conditioning
- Private Parking Space
- Sun Terrace

Casa Por do Sol is a spacious, 1 double bedroom apartment of 98m² located in a small block of 2 further apartments, in addition to the hairdressing salon, doctor's surgery and physiotherapy unit.

The apartment is accessed directly from the pathway and benefits from a private parking space nearby.

Living accommodation is arranged over one level, with an entrance hallway leading to the double bedroom with en-suite shower room and air conditioning unit.

The spacious lounge, with attached dining area, includes a feature fireplace, air conditioning unit and patio doors onto the terrace.

The compact kitchen, accessible from the dining area, incorporates ample units and comes fully equipped with a fridge/freezer, electric cooker and hob and also provides access to the south westerly facing terrace.

Casa Por do Sol also incorporates a guest cloakroom located at the end of the hallway.

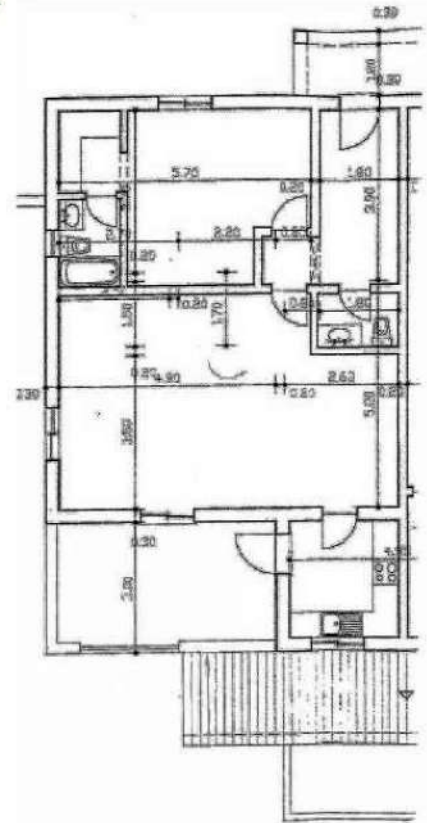
The property is offered on a lifetime residency basis at a price of £169,500.

Lifetime Residency £169,500

Casa Por do Sol



Casa Por do Sol No.27



Casa Por do Sol is situated in the hillside village of Monte da Palhagueira. This award winning village is specifically designed for the over 55's and benefits from a 24-hr nurse call out system, in addition to providing a range of village amenities including: two

swimming pools, the Anglican Church of St Luke, the Le Marquis restaurant and 22 acres of village gardens.

The village is located in the hills between the market towns of Loulé and São Bras de Alportel, just 20 minutes drive from Faro International Airport.



Terrace View



Village Swimming Pool



Living Room

To arrange a viewing of this, or any other properties within the village, please contact:
Alexandre Neves, Monte da Palhagueira, Gorjões, Santa Barbara de Nexe, Algarve,
 Portugal Tel: +351 289 990900 Fax +351 289 992739
 Email: mdpvillage@amesburyabbey.com Web: www.retirementvillageportugal.co.uk



Monte da Palhagueira Village is part of the Amesbury Abbey Group
 Church Street, Amesbury, Wiltshire SP4 7E United Kingdom Tel: +44 (0) 1962 760573