

# *Monte da Palhaqueira Village*

## *Algarve, Portugal*



### *Casa Skodbo*

1 Bedroom Town House

- Area of Construction 92m<sup>2</sup>
- 1 Bedroom
- 2 Bathrooms, 1 En-suite
- Fully Fitted & Equipped Kitchen
- Large Terrace with Barbecue
- Air Conditioning
- Garage
- Store Room

This 1 bedroom town house offers deceptively spacious accommodation and is situated at the end of a terrace of three, to the east of the village.

Accommodation comprises: entrance hallway with cloak room and storage space, 1 double bedroom with fitted wardrobes, air conditioning and en-suite bathroom.

The fully fitted kitchen incorporates ample units, a fridge/freezer plus electric cooker and hob, in addition to a washing machine.

A large living/dining room with an open fireplace in the living room and air conditioning unit in the dining area, provides direct access to the terrace, which enjoys views over the village towards the west.

Casa Skodbo also offers a good sized patio, a store room and a single garage.

The property is offered on a lifetime residency basis at a price of £140,000.

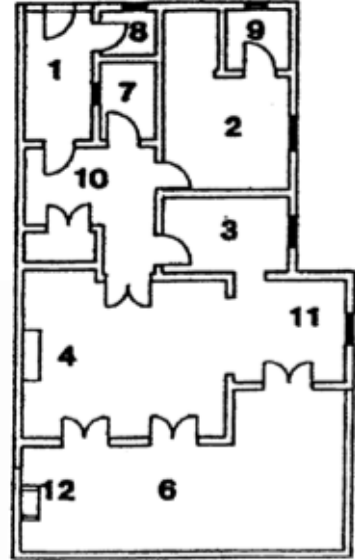
**Lifetime Residency £140,000**

# Casa Skodbo



Casa Skodbo  
No. 2

FLOOR PLAN - COVERED AREA 107m<sup>2</sup>



1. Entrance
2. Bedroom.....3.75m x 3.25m
3. Kitchen.....3.75m x 2.00m
4. Sitting room..... 5.10m x 4.40m
6. Terrace
7. Cloak room.....1.50m x 2.25m
8. Store room.....1.50m x 1.10m
9. Bathroom en suite.....2.00m x 1.70m
10. Hall.....3.30m x 2.20m
11. Dining area.....3.05m x 2.95m
12. Barbecue

**Casa Skodbo** is situated in the hillside village of Monte da Palhagueira. This award winning village is specifically designed for the over 55's and benefits from a 24-hr nurse call out system, in addition to providing a range of village amenities including: two

swimming pools, the Anglican Church of St Luke, the Le Marquis restaurant and 22 acres of village gardens.

The village is located in the hills between the market towns of Loulé and Saõ Bras de Alportel, just 20 minutes drive from Faro International Airport.



Casa Skodbo



Terrace View



Casa Skodbo

To arrange a viewing of this, or any other properties within the village, please contact:  
**Alexandre Neves, Monte da Palhagueira, Gorjões, Santa Barbara de Nexe, Algarve, Portugal**  
 Tel: +351 289 990900 Fax +351 289 992739  
 Email: [mdpvillage@amesburyabbey.com](mailto:mdpvillage@amesburyabbey.com) Web: [www.retirementvillageportugal.co.uk](http://www.retirementvillageportugal.co.uk)



Monte da Palhagueira Village is part of the Amesbury Abbey Group  
 Church Street, Amesbury, Wiltshire SP4 7E United Kingdom Tel: +44 (0) 1962 760573